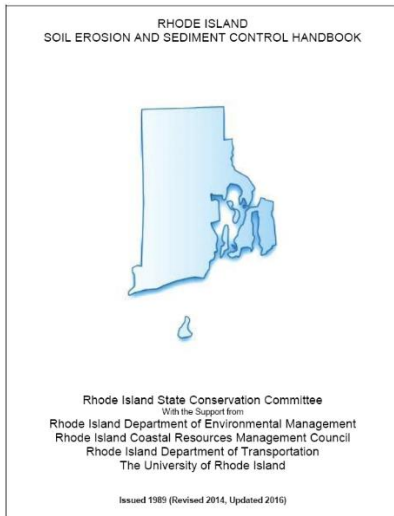


RI Soil Erosion and Sediment Control Tools and Resources for RI

#1 RI Soil Erosion and Sediment Control Handbook



The RI State Conservation Committee has approved the July 2016 updates to the 2014 Rhode Island Soil Erosion and Sediment Control Handbook. The changes include updates to technical guidance, figures, language, format and clarification of terms.

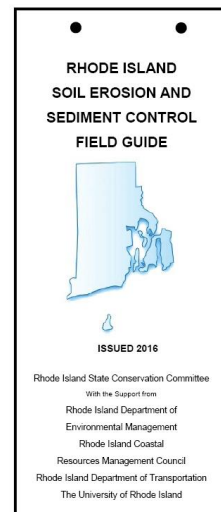
Major updates were made to:

Section One: Introduction, Part A. *About this Handbook* was updated to include a section ‘Areas of Special Consideration’ which focuses on Watercourses and Wetlands, Agricultural Operations and

Agricultural Lands, and Forestry Operations and Forestry Lands; Section Two: Site Planning and Management, Part D. Soil Erosion and Sediment Control Plans was updated to be more consistent with the Minimum Standard 10 in the *Rhode Island Stormwater Design and Installation Standards Manual*; Section Six: Sediment Control Measures, Temporary Crossings were revised for additional information on ‘Temporary Stream Crossings’, ‘Swamp Mats’, and Appendix P, *Soil Erosion and Sediment Control Review Checklist for Plan Reviewers*.

<http://www.dem.ri.gov/programs/bn-ares/water/pdf/riesc-handbook16.pdf>

#2 RI Soil Erosion and Sediment Control Field Guide

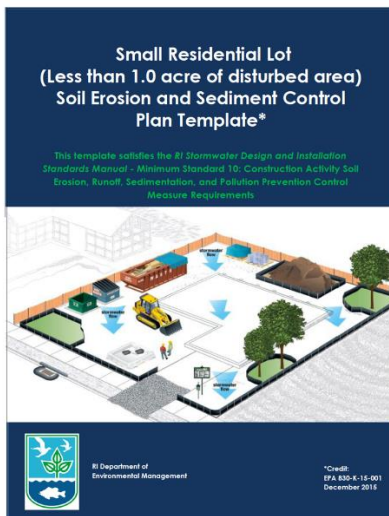


The Field Guide is a newly created companion document to the RI Soil Erosion and Sediment Control

Handbook. The Field Guide is not intended to be an all-inclusive document. It is intended to be used by installers, inspectors, and maintenance staff. The format fits nicely on a cell phone or tablet for a handy and portable document intended for use in the field. The Field Guide contains information on 45 of the most commonly used control measures that address Pollution Prevention and Good Housekeeping, Erosion Control, Runoff Control, and Sediment Control.

<http://www.dem.ri.gov/programs/bn/ateres/water/pdf/soilerosionfield16.pdf>

#3 Soil Erosion and Sediment Control Plan Template <1 Acre Sites

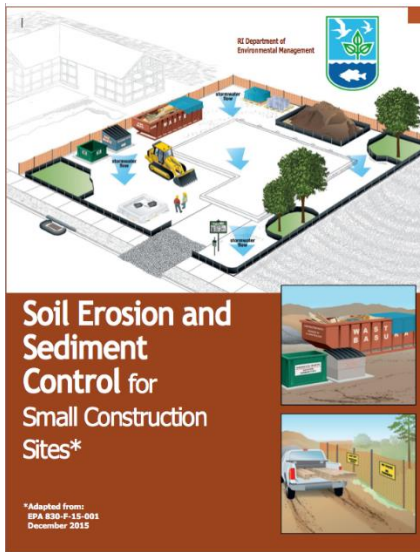


To comply with the *RI Stormwater Design and Installation Standards Manual (RISDISM)- Minimum Standard 10 – Construction Activity*

Soil Erosion, Runoff, Sedimentation, and Pollution Prevention Control Measure Requirements, all construction operators are required to develop a “Soil Erosion and Sediment Control Plan” (or “SESC Plan”). Refer to *Section 3.2.10 and 3.3.7 of the RISDISM* for additional information. The requirement to develop a SESC Plan applies equally to small-scale construction projects as it does to large-scale construction projects, but the level of detail may vary depending on the nature of a given project. A SESC Plan for the construction of a single residential lot may require less detail because such projects are often easily managed with basic control measures (CMs). Moreover, these projects are relatively small and are usually completed relatively quickly. Where documentation is required, it can be done in a relatively concise manner. With that in mind, RIDEM has developed the *Small Residential Lot SESC Plan Template*, based on US EPA’s December 2015 “Small Residential Lot Stormwater Pollution Prevention Plan Template (EPA 830-K-15-001). The template can be found on the following webpage:

<http://www.dem.ri.gov/programs/water/permits/ripdes/stormwater/soilerosion.php>

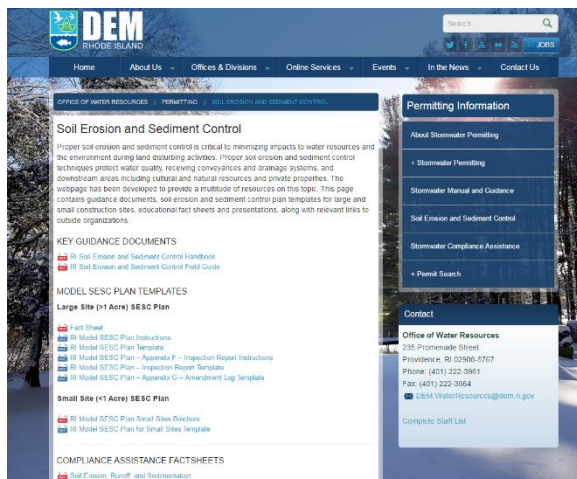
#4 Educational Brochure



An Educational Brochure on SESC Plans for Small Construction Sites has also been customized for RI and can be found here:

<http://www.dem.ri.gov/programs/water/images/sesc-small-lot-2016.pdf>

#5 RIDEM Webpage Dedicated to Soil Erosion and Sediment Control



Each of the new or recently updated documents listed above have been

incorporated into the following newly created RIDEM webpage. This webpage contains a number of valuable resources dedicated to the topic of Soil Erosion and Sediment Control:

<http://www.dem.ri.gov/programs/water/permits/ripdes/stormwater/soil-erosion.php>

#6 Stay Informed Regarding Stormwater Topics, Updates, and Corrections Automatically

Persons wishing to be on a list serve to receive electronic notices of future additions, updates, corrections or related information regarding all Stormwater topics including Soil Erosion and Sediment Control will need to subscribe to the RIDEM Office of Water Resources (OWR) email list.

The OWR has created an e-mail list to distribute guidance, policies, and new regulations regarding a variety of stormwater topics. You can subscribe by visiting the user-friendly webpage at:

<http://listserve.ri.gov/mailman/listinfo/owrinfo>

If you have difficulty subscribing or have other questions, email: owner-owrinfo@listserve.ri.gov